

BIOLOGY
THROUGH
ART

biothruart.org



Animalia

Non-Bilateria



Porifera

("pore carrying"; sponges)



Suspension feeders without organs, can be large (over 2m-6ft).

AN01



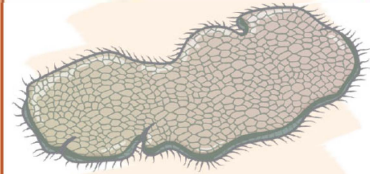
Animalia

Non-Bilateria



Placozoa

("Flat animals")



Upper and lower layers of cells with cilia; microscopic (1-3mm).

AN02



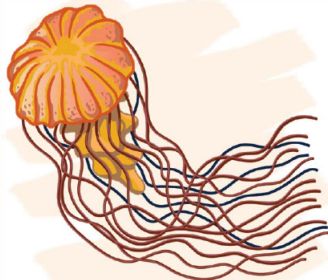
Animalia

Non-Bilateria



Cnidaria

("nettle"; jellyfish, anemones)



With stinging tentacles, can form coral reefs, individuals can be large (over 2m-6ft).

AN03



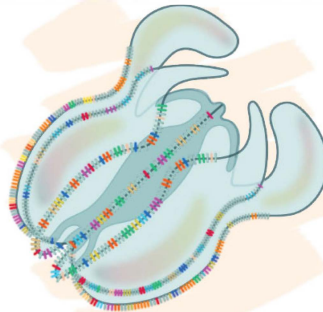
Animalia

Non-Bilateria



Ctenophora

("comb carrying"; comb jellies)



predators with long sticky tentacles, medium (up to 1m-3ft).

AN04



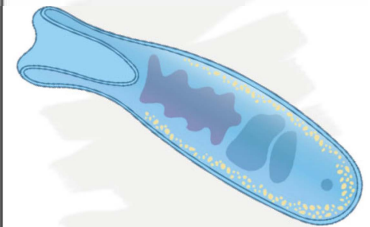
Animalia

Wild Card



Xenacoelomorpha

("stranger hollow form")



Flat marine predators, small (up to 5cm=2in).

AW01



Animalia

Deuterostomia



Echinodermata

("spiny skin")



Starfish, sand dollars, urchins, can be large (up to 3m-9ft).

AD01



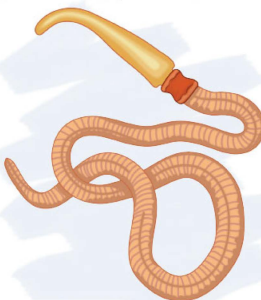
Animalia

Deuterostomia



Hemichordata

("half cord"; acorn worms)



Burrowers, can live in colonies, can be large (over 2m-6ft).

AD02



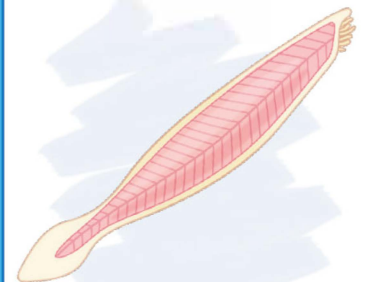
Animalia

Deuterostomia



Chordata

("cord")



Includes vertebrates, developmental notochord, can be huge (over 25m-75ft).

AD03



Animalia

Protostomia



Chaetognatha

("bristle jaw"; arrow worms)



Marine predators with spines around mouth; small (up to 12cm=5in)

AP01



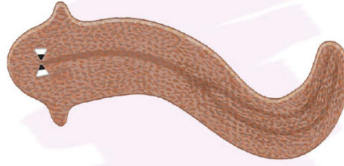
Animalia

Protostomia



Platyhelminthes

("flat worm")



Predators and parasites on land and water; usually small (less than 30cm=12in)

AP02



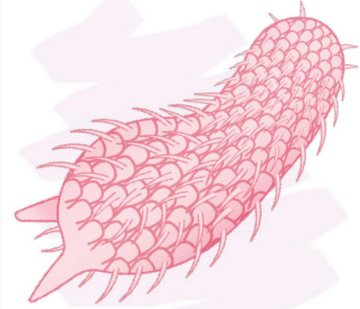
Animalia

Protostomia



Gastrotricha

("stomach hair")



Aquatic detritivores in sand and debris; microscopic (~2mm)

AP03



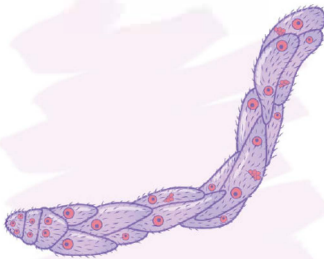
Animalia

Protostomia



Dicyemida

("two embryos")



Elongate parasites within cephalopods; microscopic (~2mm)

AP04



Animalia

Protostomia



Nemertea

("truthful"; ribbon worms)



Long, flat predators in marine sediment; can be large (over 2m=6ft)

AP05



Animalia

Protostomia



Mollusca

("soft")



Snails, clams, slugs, squid, can be very large (up to 10m=33ft)

AP06



Animalia

Protostomia



Annelida

("little rings"; segmented worms)



Earthworms, leeches, in and on the sediment; often small (less than 30cm=12in)

AP07



Animalia

Protostomia



Entoprocta

("inside end")



With feeding tentacles around cup; very small (less than 7mm=1/4in)

AP08



Animalia

Protostomia



Cycliophora

("circle carrying")



Lives in mouthparts of lobsters; microscopic (less than 1mm)

AP09

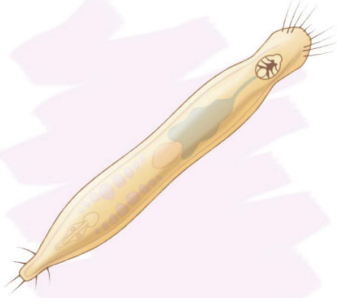
Animalia

Protostomia



Gnathostomulida

("jaw little mouth")



Jaws snap at bacteria in sediment; microscopic (less than 4mm).

AP10

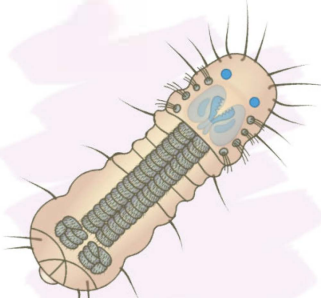
Animalia

Protostomia



Micrognathozoa

("tiny jaw animals")



Jaws snap at bacteria in moss; microscopic (less than 1mm).

AP11

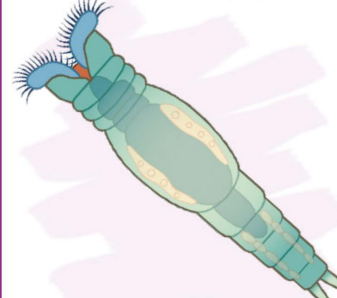
Animalia

Protostomia



Rotifera

("wheel carrying")



Cilia on corona used for feeding and movement; generally microscopic (less than 1mm).

AP12

Animalia

Protostomia



Phoronida

("bringer of a price")



Cilia on tentacles move food to mouth; small (up to 25cm=10in).

AP13

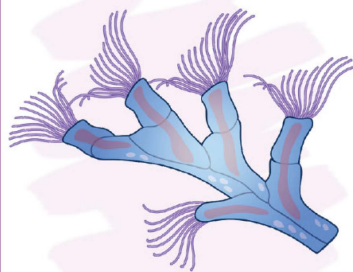
Animalia

Protostomia



Bryozoa

("moss animal")



Aquatic colonies; resemble corals; individuals usually small (less than 1mm).

AP14

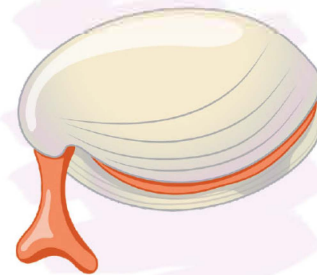
Animalia

Protostomia



Brachiopoda

("arm foot"; lamp shells)



Clam-like shells on a stalk; small (less than 10cm=4in).

AP15

Animalia

Protostomia



Nematoda

("thread-like"; roundworms)



Predators and parasites in and around organisms; usually microscopic (less than 1mm).

AP16

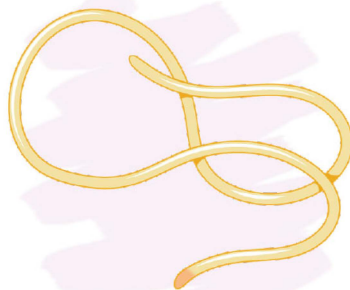
Animalia

Protostomia



Nematomorpha

("thread-like form"; horsehair worms)



Skinny, long parasites; small-medium (up to 1m=3ft).

AP17

Animalia

Protostomia



Kinorhyncha

("moving snout")



Ingest organic material in marine sediment; microscopic (less than 1mm).

AP18



Biology through Art (biothruart.org).

Invertebrate icon cards, for educational use. Each card depicts a phylum (major group) within Kingdom Animalia, based on consensus phyla from the textbooks:

Brusca et al. (2022; *Invertebrates*, 4th ed; Oxford Univ Press)

Pechenik (2014; *Biology of the invertebrates*, 7th ed; McGraw Hill)

Icon artwork: Mesa Schumacher (mesaschumacher.com).

Icon design: Mike Maxwell, Mesa Schumacher.

Card design: Mike Maxwell, Ego Id Media (egoidmedia.com).

Version 2 (17-Mar-2026).



Biology through Art acknowledges support from the National Science Foundation (NSF DUE IUSE 2315749; NSF DBI RCN-UBE 2120607).